



מדינת ישראל
משרד החינוך



מערכת שידורים לאומית

Fairy Tales and Legends

Grade 6 | English

With: Karen Preis-Hirschberg

.Please make sure to bring paper and a pencil



What will we do today?

- Talk about imagination
- Solve some word jumbles
- What's a fairy tale? What's a legend? Which one was Robin Hood?
- The differences between the two; new vocabulary and the answer about Robin Hood
- Review and fun activities



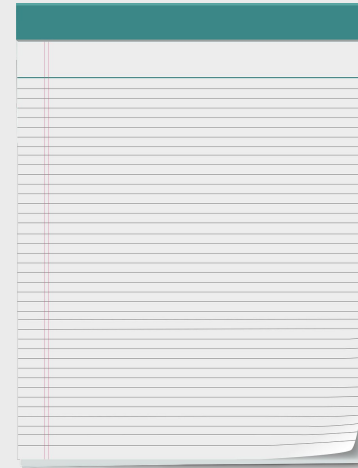


What do you need to prepare for the class?





What do you need to prepare for the class?



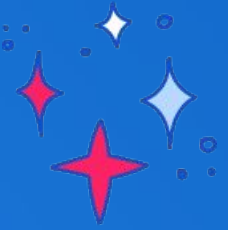
00:30



Something before we begin ...



Icebreaker

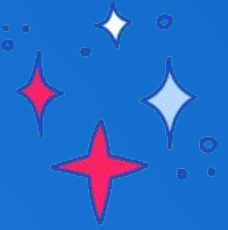


Can you unscramble these words? They all have to do with fairy tales

- ueqne
- sinprces
- ngki
- agcim
- odog
- live



Icebreaker



Can you unscramble these words? They all have to do with fairy tales

- ueqne
- sinprces
- ngki
- agcim
- odog
- live

01:00



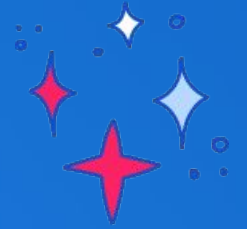
Icebreaker

Can you unscramble these words? They all have to do with fairy tales

- ueqne **queen**
- sinprces **princess**
- ngki **king**
- agcim **magic**
- odog **good**
- live **evil**



■ What do we know already?



Fairy Tales - 5 Elements:

1. Must begin with “Once upon a time..”
2. Must have a good character and an evil one.
3. Most have magic or some mystical quality.
4. Must have some problem or conflict.
5. Must end with “...and they lived happily ever after.”



■ Let's Begin!



Fairy Tale vs Legend



■ Explanation

A **legend** is usually a **fairy tale** based on a true story, but not always.

For example: Robin Hood



■ Some new vocabulary

**fantasy /
fact**

hero

**evil or bad
man**

plot

brave

kinds of

popular



Some new vocabulary

**fantasy /
fact**

hero

**evil or bad
man**

plot

brave

kinds of

popular

01:00



■ Robin Hood

Robin Hood is a **hero** from the 13th-14th century. This is a **fact**.

There are many **kinds of** his stories. Usually, Robin Hood is a soldier who has come home from the war to find that the **evil** sheriff, has taken away everyone's home, their money and their land.

He goes into the forest to hide and to think about how to help the people. He joins with a group of other **brave** people and they steal from the rich to help the poor.

He became a **legend** because people have told his story to one another for years.

Robin Hood is one who still remains **popular**.





Do you remember?



- 1. What is the difference between a fairy tale and a legend?**
- 2. What are the five elements of a fairy tale?**





Do you remember?



- 1. What is the difference between a fairy tale and a legend?**
- 2. What are the five elements of a fairy tale?**



02:00





Check your Answers:

?What is the difference between a fairy tale and a legend .1

A fairy tale is a fantasy story and a legend is a fairy tale based on fact.

?What are the five elements of a fairy tale .2

1. Must begin with “Once upon a time..”
2. Must have a good character and an evil one.
3. Most have magic or some mystical quality.
4. Must have some problem or conflict.
5. Must end with “...and they lived happily ever after.”



Can you match the description to the character?

1. Rapunzel
 2. The Ugly Duckling
 3. Red Riding Hood
 4. Snow White
 5. Sleeping Beauty
- a. I have a grandmother. I wear a red cape and I don't like wolves.
 - b. I have very long hair and a strange name. I don't like to be locked up in towers. Who am I?
 - c. I made friends with seven small people and lived with them in the forest.
 - d. My parents hid me from an evil fairy godmother who wanted me to die.
 - e. I like to swim and to fly. I am rather beautiful now but once I thought I was ugly.



Can you match the description to the character?

1. Rapunzel
 2. The Ugly Duckling
 3. Red Riding Hood
 4. Snow White
 5. Sleeping Beauty
- a. I have a grandmother. I wear a red cape and I don't like wolves.
 - b. I have very long hair and a strange name. I don't like to be locked up in towers. Who am I?
 - c. I made friends with seven small people and lived with them in the forest.
 - d. My parents hid me from an evil fairy godmother who wanted me to die.
 - e. I like to swim and to fly. I am rather beautiful now but once I thought I was ugly.

03:00



Can you match the description to the character?

- | | | |
|----------------------|----|---|
| 1. Rapunzel | a. | I have a grandmother. I wear a red cape and I don't like wolves. |
| 2. The Ugly Duckling | b. | I have very long hair and a strange name. I don't like to be locked up in towers. Who am I? |
| 3. Red Riding Hood | c. | I made friends with seven small people and lived with them in the forest. |
| 4. Snow White | d. | My parents hid me from an evil fairy godmother who wanted me to die. |
| 5. Sleeping Beauty | e. | I like to swim and to fly. I am rather beautiful now but once I thought I was ugly. |

What did we learn today?

- Five elements of a fairy tale
- Difference between a fairy tale and a legend
- New helpful vocabulary
- The story of Robin Hood

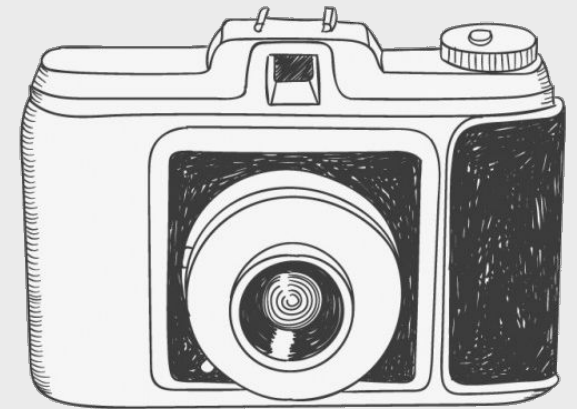


■ Some fun to do now:



On the next slide is a logic puzzle.
Solve it and send the answer to your
teacher.

(Take a picture of the screen)



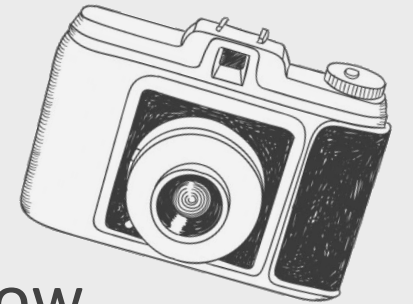
A Logic Puzzle

Little Red Riding Hood, Rapunzel , Sleeping Beauty and Cinderella ate dinner with Shrek, Robin Hood, Prince Charming and The Pied Piper.

Read the clues to find out who ate with whom and answer the question:

Which lady ate with Prince Charming?

- ✓ Cinderella and Prince Charming didn't eat together.
- ✓ Little Red Riding Hood never met her dinner partner until now.
- ✓ Rapunzel wouldn't eat with someone who plays an instrument.
- ✓ Robin Hood ate dinner with someone who needed a haircut.
- ✓ Sleeping Beauty ate dinner with the character who doesn't wear a cape.





מדינת ישראל
משרד החינוך

■ Thank you for
!watching
הופק עבור משרד החינוך ע"י מטח